

The Angmering School - Student Bulletin Week 36

TIMETABLE : WEEK 2

Monday 24th June

-

Tuesday 25th June

- Stoke Mandeville Games
- Summer Production

Wednesday 26th June

- Stoke Mandeville Games
- Summer Production

Thursday 27th June

- Stoke Mandeville Games
- Year 7 Science Fair

Friday 28th June

- Stoke Mandeville Games
- Jack the Ripper Trip - Year 9

Cake Sale

Year 10 ASDAN business project will be selling cakes and bracelets in the LNC on the 4th July break and lunch. All profits go to the LNC Charitable Trust.

Please come along and support the group and the charity

Word of the Week

This week's word of the week is 'their', 'they're' and 'there'. These are words that often confuse students and are common mistakes in written work. It is important that students can differentiate between them.

'Their' means it belongs to them, eg "I ate their sweets." 'They're' is short for 'they are' eg "They are going to the cinema this evening." 'There' refers to a place, eg "I'm going to cycle over there."

Full Steam Ahead Event



STEAR

FULL STEAM AHEAD

Tue	DRAMA AND DANCE SUMMER PRODUCTION Mary Poppins JR	25th
Wed		26th
Thurs	ART, PHOTOGRAPHY, DESIGN & TECHNOLOGY EXHIBITION Art - Photography - Architecture & Interior Design - Engineering - Food - GCSE and A-Level showcase	27th
Tue	LNC ART TRAIL Artworks on display outside school gates	WB 25th
Thurs	SCIENCE FAIR Year 7 Science Fair showcase - Prize giving BBQ - Howie's Coffee	27th
Thurs	COMIC ART WORKSHOP WITH KEV F SUTHERLAND	27th

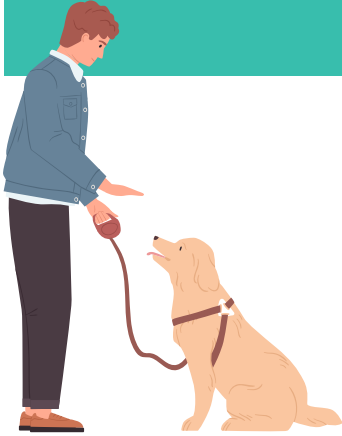
Lost Property



Please see the lost property list : [Lost Property](#)

The Angmering School - Student Bulletin Week 36

Career of the Week - Assistance Dog Trainer



You could do a course at college which may give you some of the skills and knowledge needed to do this job. Courses include:

- Level 1 or 2 Diploma in Animal Care
- T Level in Animal Care and Management

You'll usually need:

- 2 or fewer GCSEs at grades 3 to 1 (D to G), or equivalent, for a level 1 course
- 2 or more GCSEs at grades 9 to 3 (A* to D), or equivalent, for a level 2 course
- 4 or 5 GCSEs at grades 9 to 4 (A* to C), or equivalent, including English and maths for a T Level

In this job, you'll:

- work with volunteers who foster puppies and young dogs, assess dogs to go forward for training, train dogs to the standards required, match dogs to new owners, train dogs and owners together, provide aftercare and support for owners and their dogs and keep accurate records

With experience you could become an area team supervisor, training manager or regional manager. You could move into related jobs like veterinary nurse or RSPCA inspector.

If you would like more information contact Mr Bowles (gbowles@theangmeringschool.co.uk)

New Year 8 Student Ambassadors

We are so proud of our new Year 8 student ambassadors! They were brilliant at their first event, the Youth Matters Debate. They showed incredible confidence and leadership. We couldn't be happier with their performance, and we can't wait to see what else they'll achieve as student ambassadors. They're such superstars!



The Angmering School - Student Bulletin Week 36

Morning & Lunchtime Clubs List

Monday	Tuesday	Wednesday	Thursday	Friday
Morning Clubs (7:45am - 8:25am)				
Year 10 Football (DJE)	All Years Girls Netball (JRU/OMI/LSM)	Year 10 Cricket (DJE)	Year 8 Football (DJE)	All Years Boys Basketball (DJE)
Lunchtime Clubs				
Lunchtime Sports Clubs	All Years Badminton Club (SPO)	Lunchtime Sports Clubs	All Years Basketball (Sports Hall)	KS4 Football (Sports Hall)
Vocalise (Singers all ages) in M1	All Years Basketball (Sports Hall)	Keyboard Club in M1	Music Tech & New Bands in M4	Show Band (any instrument) in M4
KS3 Chess & Board Game Club in B38	KS3 Chess & Board Game Club in B38	KS3 Chess & Board Game Club in B38	KS3 Chess & Board Game Club in B38	KS3 Chess & Board Game Club in B38
Library Clubs	Library Clubs	Library Clubs	Library Clubs	Library Clubs
Homework Support / Computing Support in L3	Homework Support / Computing Support in L3/L22	Homework Support / Computing Support in L3	Homework Support / Computing Support in L3	Homework Support / Computing Support in L3/L22
Mathswatch Support in B25	'Beat it' - Fusion Drumming in M Block	Year 7 and 8 Geography Club in F23	KS4 GCSE French revision/booster class	Mathswatch Support in B25
	KS4 Book Club in E4	KS3 Creative Media Workshop in L21		
	Years 7-9 Horrible History Club in F29	Mathswatch Support in B25		

The Angmering School - Student Bulletin Week 36

After School Clubs List - for fixtures please refer to the clubs list on our website or ask a PE staff member.

Monday	Tuesday	Wednesday	Thursday	Friday
After School Clubs (3:15pm - 4:15pm) * timings may differ for each club				
All Years Girls Rounders (OMI, SLU, JRU , LSM)	KS3 Cricket (DAT, FRA, JMR)	Year 7 and 8 Rugby League (JMR)	All Years Tennis (LSM)	
The L&S Youth Company in P38	Chess Club All Welcome (GCO)	KS3 Athletics	All Years Volleyball (JMR)	
All Years Boys Dance Club in P1	Year 11 Art Catch-Up (F31)	Chess Club All Welcome (GCO)	All Years Stoolball (SPO)	
Show Band (Any Instrument) in M4	Music Rehearsal/ Practice Space in M Block	Year 11 Art Catch-Up (F34)	Year 7 Dance Club in P38	
Homework Club in The Library	Warhammer Club in F32	Music Rehearsal/ Practice Space in M Block	National Connections Drama (LPE)	
	Homework Club in The Library	All Years Drama Club (LPE)	Year 11 Photography Catch-Up (F30)	
		Verve Dance Company in P38	Homework Club in The Library	
		Homework Club in The Library	Chess Club All Welcome (GCO)	